

ADDISON RESERVE REPLAT LOTS 9 - 14, BLOCK 1, "ADDISON RESERVE PARCELS ONE & TWO", PLAT BOOK 76 PAGES 4 THROUGH 7 OF THE PUBLIC RECORDS OF PALM BEACH COUNTY, FLORIDA

PART OF GLENEAGLES/POLO CLUB WEST P. U. D.
SITUATE IN SECTION 27, TOWNSHIP 46 SOUTH
RANGE 42 EAST
PALM BEACH COUNTY, FLORIDA
JANUARY, 1996 SHEET 2 of 2

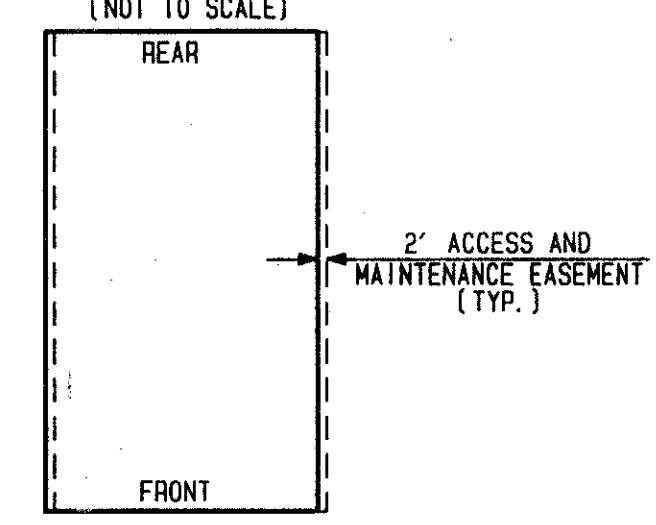
STATE OF FLORIDA
COUNTY OF PALM BEACH
THIS PLAT WAS FILED FOR
RECORD _____ DAY OF _____
AD, 1996 AND DULY RECORDED
IN PLAT BOOK _____ ON PAGES
_____ AND _____
DOROTHY H. WILKEN, CLERK
BY: _____, D. C.

CIRCUIT COURT SEAL

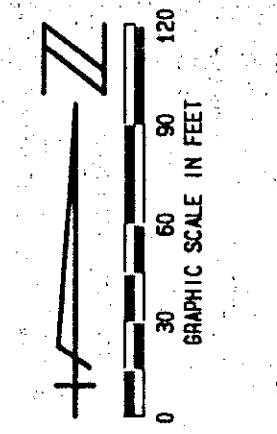
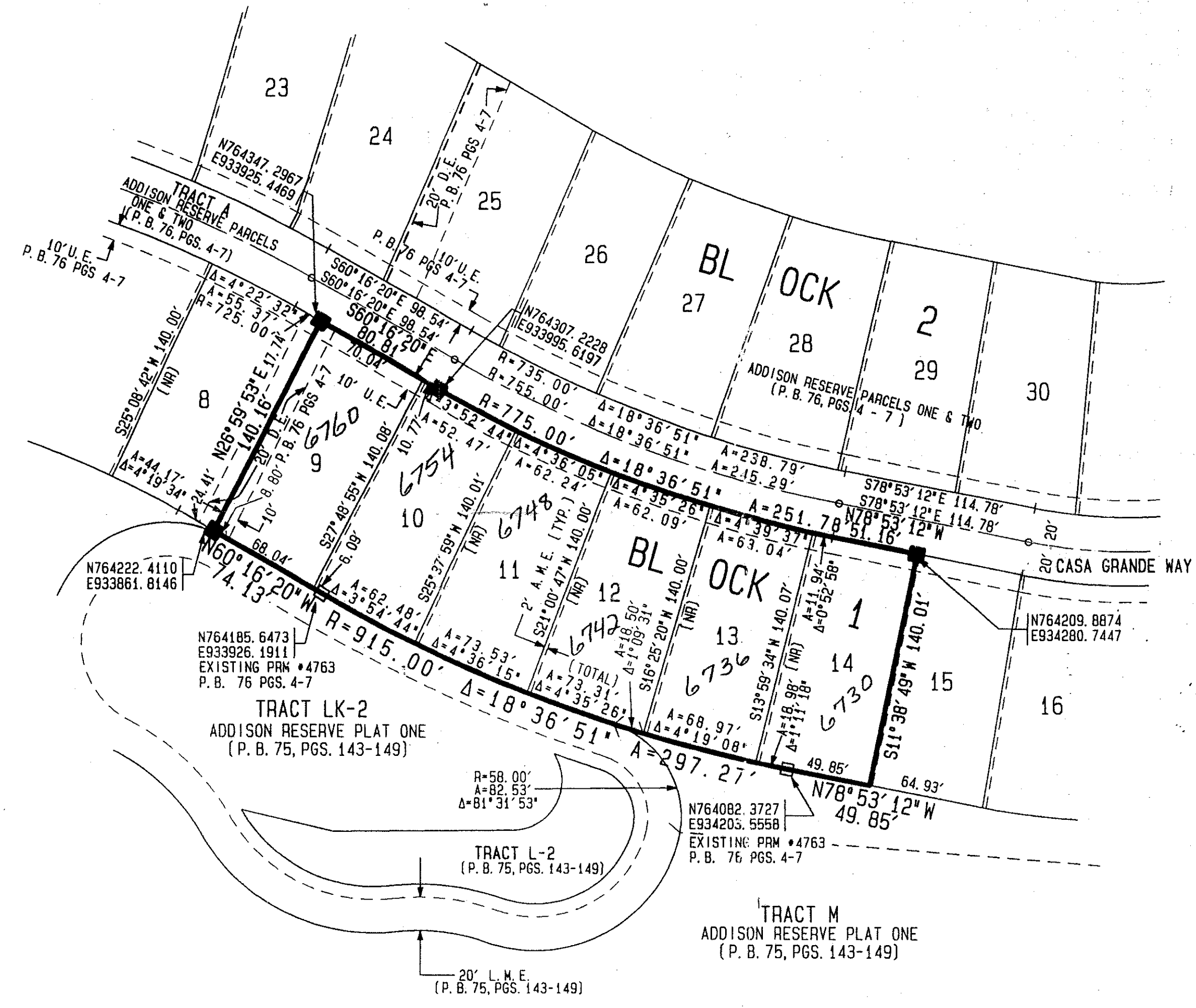
PET. 80-215H
#0001
5/3/3/K

24

DETAIL FOR ACCESS AND
MAINTENANCE EASEMENT
(NOT TO SCALE)

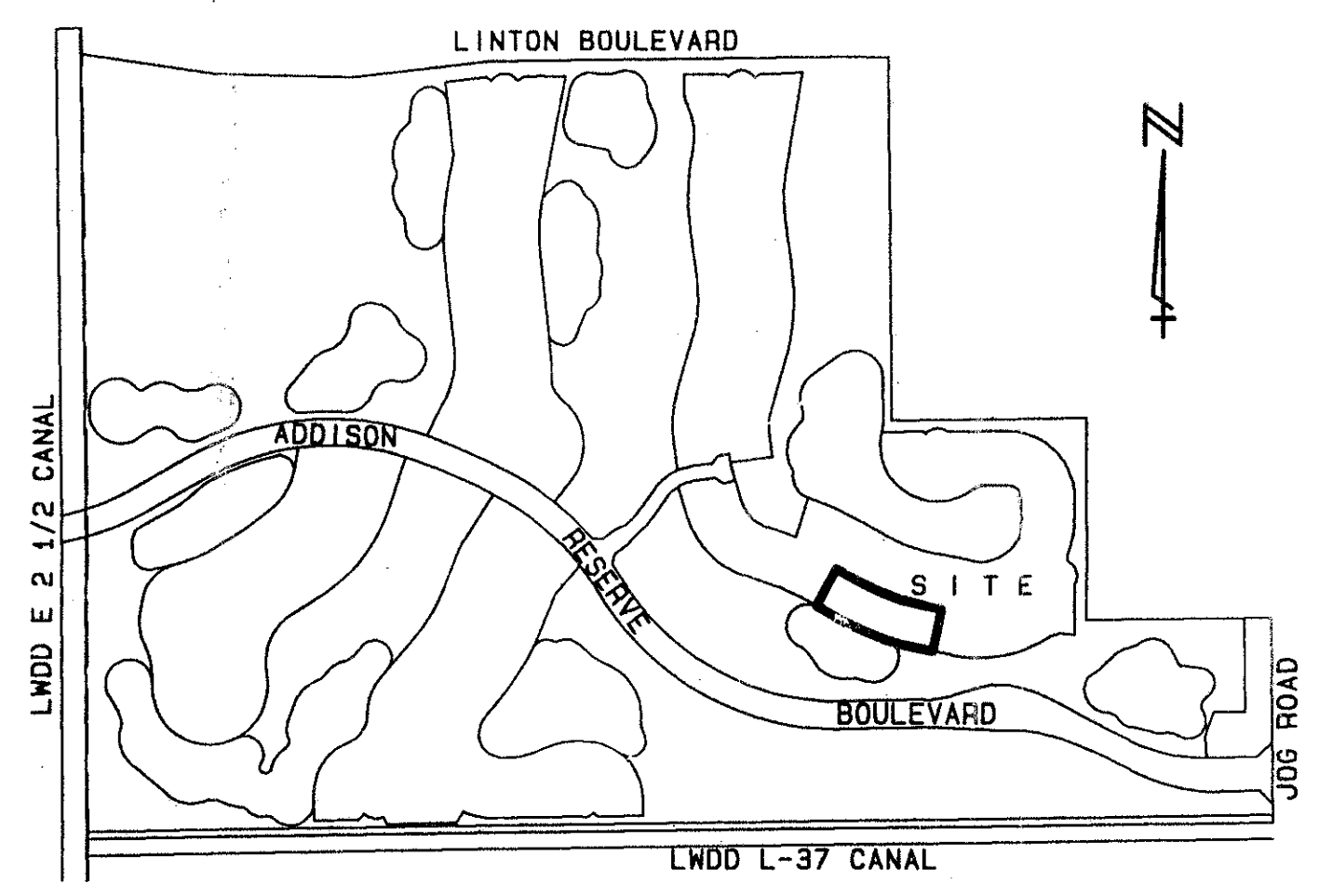


NOTE: AN ACCESS AND MAINTENANCE EASEMENT, 2 FEET IN WIDTH, EXISTS ON EACH LOT FROM THE FRONT TO THE REAR, ADJACENT TO AND CONTIGUOUS WITH THE ZERO LOT LINE OF THE ADJOINING LOT. THIS EASEMENT IS FOR ACCESS AND MAINTENANCE AND IS IN FAVOR OF THE ADJOINING LOT, ITS SUCCESSORS AND ASSIGNS, WITHOUT RECOURSE TO PALM BEACH COUNTY.
SEE "DETAIL FOR ACCESS AND MAINTENANCE EASEMENT".



PAR 1 & 2
POLO CLUB WEST PUD

SUBMISSION # ADDISON RESERVE
BOOK 77 PAGE 17
FLOOD ZONE S FLOOD MAP #215A
QUAD # 37 ZONING RTS
SE 80-215 ZIP CODE 33444
PUD NAME GLENEAGLES/POLO CLUB WEST
TRZ 478



SHEET LOCATION MAP
NOT TO SCALE

- LEGEND:
- L. W. D. D. LAKE WORTH DRAINAGE DISTRICT
 - FPL FLORIDA POWER & LIGHT
 - ORB OFFICIAL RECORD BOOK
 - PBCO PALM BEACH COUNTY
 - PRM PERMANENT REFERENCE MONUMENT
 - P. B. PLAT BOOK
 - PP. PAGES
 - PS. PAGE
 - U.E. UTILITY EASEMENT
 - D.E. DRAINAGE EASEMENT
 - TWP TOWNSHIP
 - RE RANGE
 - (NR) NON-RADIAL CENTERLINE
 - PERMANENT CONTROL POINT
 - PERMANENT REFERENCE MONUMENT
 - SET PLS* 4763
 - PERMANENT REFERENCE MONUMENT FOUND
 - L. M. A. E. LAKE MAINTENANCE ACCESS EASEMENT
 - L. M. E. LAKE MAINTENANCE EASEMENT
 - L. A. E. LIMITED ACCESS EASEMENT
 - A. M. E. ACCESS AND MAINTENANCE EASEMENT
 - R/W RIGHT OF WAY
 - EASE EASEMENT
 - PUD PLANNED UNIT DEVELOPMENT
 - B. E. BUFFER EASEMENT
 - NR NON-RADIAL
 - TYP. TYPICAL

COORDINATE NOTE:

ALL DISTANCES ARE GROUND
SCALE FACTOR = 1.0000242
DATUM = NAD 83 1990 ADJUSTMENT
ZONE = FLORIDA EAST
LINEAR UNIT = US SURVEY FEET
COORDINATE SYSTEM 1983 STATE PLANE
TRANSVERSE MERCATOR PROJECTION
GROUND DISTANCE X SCALE FACTOR = GRID DISTANCE

COORDINATES SHOWN ARE GRID
EAST LINE OF LOT 14, BLOCK 1
ADDISON RESERVE PARCELS ONE & TWO
PB 76 PGS 4-7 Basis of Bearings

0230-019

THIS INSTRUMENT WAS PREPARED BY MARY HANNA CLODFELTER, P.L.S., IN THE OFFICES OF MOCK, ROOS & ASSOCIATES, INC., 5720 CORPORATE WAY, WEST PALM BEACH, FLORIDA 33407.

MOCK, ROOS & ASSOCIATES, INC.
5720 CORPORATE WAY, WEST PALM BEACH, FL 33407 (407) 683-3113

SCALE: 1"=60' DATE: JANUARY 1995
P. A. NO. 94175.05 DWG. NO. 46-42-27-57

ADDISON RESERVE REPLAT LOTS 9-14, BLOCK 1, ADDISON RESERVE PARCELS ONE & TWO, PLAT BOOK 76 PAGES 4-7 OF THE PUBLIC RECORDS OF PALM BEACH COUNTY, FLORIDA PART OF "GLENEAGLES/POLO CLUB WEST P. U. D.

SHEET 2 OF 2
SECT. 27, T 46 S, R 42 E